

KOMATSU®

WA430-6

NET HORSEPOWER
172 kW **231 HP** @ 2100 rpm

OPERATING WEIGHT
20081 - 21052 kg **44,272 - 46,412 lb**

WASTE HANDLER BUCKET CAPACITY
Loader style: 5.7 m³ **7.5 yd³**
Pusher style: 5.0 m³ **6.5 yd³**

**Waste
Handler**

WASTE HANDLER



Photo may include optional or non-OEM equipment.

WALK-AROUND

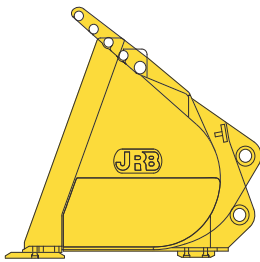
Waste Transfer Station Loaders

The Komatsu-integrated design found in this Mid-size loader offers class leading value, reliability, and versatility. Hydraulics, power train, frame, and all other major components are engineered and manufactured by Komatsu. You get a machine with components designed to work together for higher productivity and reliability, and more versatility. Now add the Komatsu designed waste transfer station packages with guarding specifically matched to the loader and the application and you have a loader which stays working longer for increased productivity.

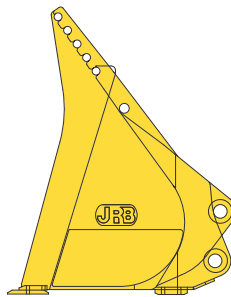
Bucket Options

Choice of two designs optimized for either loading or pushing and loading waste quickly and efficiently. These buckets feature high strength steel, a spill guard designed for maximum visibility, a visual bucket level indicator and accept Komatsu standard bolt-on cutting edges and skid shoes.

Loading Bucket

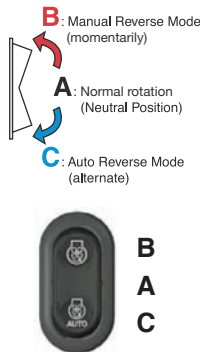


Pushing Bucket



Automatic Reversible Fan

The engine fan is driven hydraulically and can be operated in reverse automatically. When the switch is in the automatic position, the fan revolves in reverse intermittently for 2 minutes every 2 hours (default setting).



Full side opening gull-wing engine doors

Ground level engine service and daily service checks are made easy with the gas spring-assisted side opening gull-wing doors.



KOMTRAX equipped machines can send location, SMR and operation maps to a secure website utilizing wireless technology. Machines also relay error codes, cautions, maintenance items, fuel levels, and much more.

Dual-Mode Engine Power Select System

This wheel loader offers two selectable operating modes—E and P. The operator can adjust the machine's performance with the selection switch.

- **E Mode:** This mode provides maximum fuel efficiency for general loading.
- **P Mode:** This mode provides maximum power output for hard digging operation or hill climb.



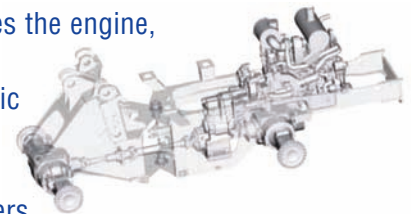
Dual mode engine power selection switch

Standard cab

with air conditioning system which pressurizes the interior to help keep dust out. Two-tier filtration system not only cleans the incoming air but also cleans the recirculated air inside the cab. Filters are easily removed for cleaning or replacement.

Komatsu Components

Komatsu manufactures the engine, torque converter, transmission, hydraulic units, and electric parts on this wheel loader. Komatsu loaders are manufactured with an integrated production system under a strict quality control system.

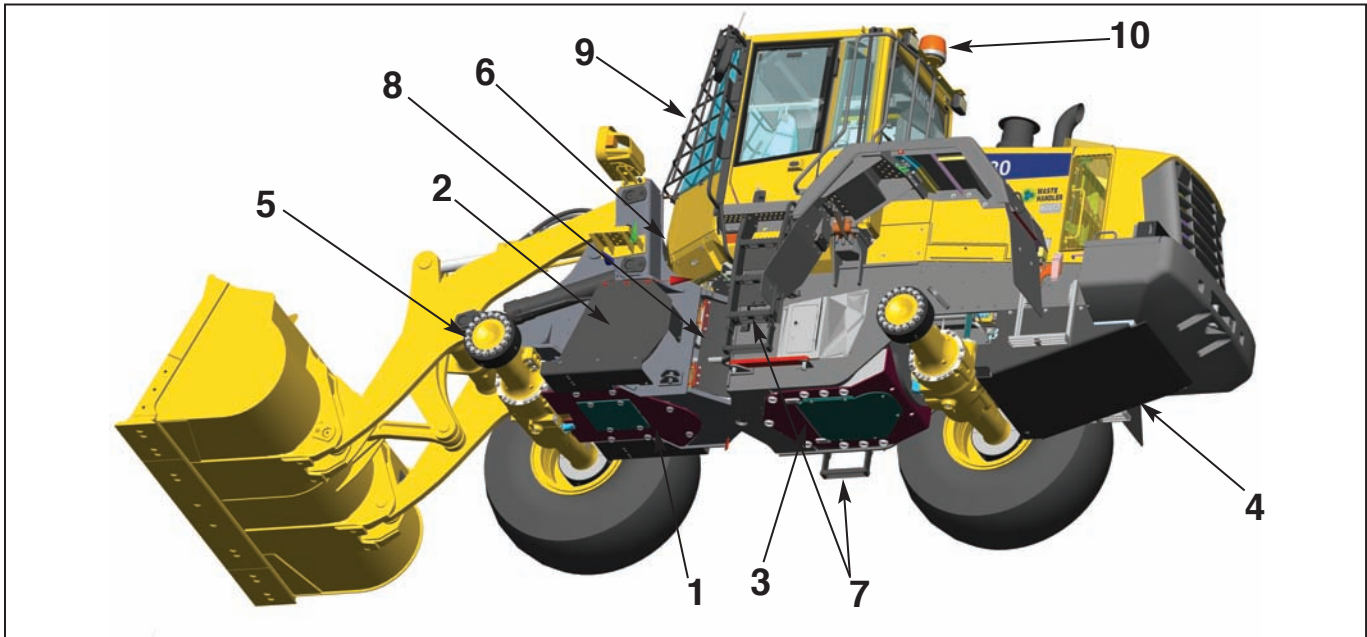


High-Rigidity Frames

The front and rear frames, along with the loader linkage, have high rigidity to withstand repetitive twisting and bending loads. Both the upper and lower center pivots have tapered roller bearings for increased durability.



GUARDING FEATURES



1. Front Frame Bottom Guard

Protects and keeps debris away from the components located within the front frame. Bolt-on hinged cover allows easy access for cleaning and maintenance.



2. Boom Cylinder and Hose Guards

Box-type steel structures prevent debris from reaching the hoses and tubes from the bottom and sides.



3. Powertrain Bottom Guard

Protects and keeps debris away from the components located within the rear frame. Bolt-on hinged cover allows easy access for cleaning and maintenance.

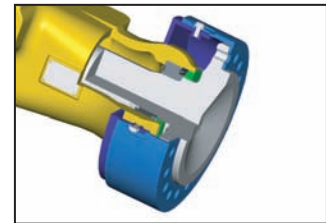


4. Fuel Tank Guard

Protects and keeps debris away from the fuel tank. Bolt-on covers allow easy access for cleaning and maintenance.

5. Axle Seal Guards

Help to protect the axle seals should material wrap around the axles during operation.



6. Front Frame Top Guard, Rubber

Helps keep debris out of the front frame.

7. HD Ladder Group

LH & RH ladders have reinforced sides and an additional back brace to better withstand impacts. Bottoms of ladders are closer to the machine to help reduce impacts.



8. Articulation Guards

Rubber guards help prevent debris from entering the frames.

9. Windshield Guard

Maximizes operator visibility while minimizing the possibility of glass breakage.



10. Light Bar with Beacon

Provides two additional rear work lights with beacon.

NOTE: Please read and follow all maintenance and cleaning instructions for this product as set forth in the operation and maintenance manual. The waste handler features of this product are no substitute for regular maintenance and cleaning in an effort to prevent debris accumulation in the engine compartment and on hot component surfaces.

WASTE-SPECIFIC FEATURES



Heavy-Duty Head Light / Tail Light Guards

Headlights are moved inward and metal guarding protects the headlights and tail lights from debris that may break or damage the lenses.

Air Pre-Cleaner

Turbo II® brand pre-cleaners are available for increased air cleaner efficiency.



High-Debris Screen Package

Heavy duty corrugated type screening used on the hood side, plus additional screened air inlets on top, significantly increase the area for air to enter the radiator. Gap seals consisting of metal and rubber weather stripping are added at the sheet metal joints to minimize debris entering the radiator air flow. Standard auto-reversing fan cleans debris from screens and radiator.



Center Hinge Guards

Flexible rubber belting protects and keeps debris away from the components running through the center hinge area and openings in the front and rear frames.



Comforts of Home

The large cab offers a large lunch box holder, a variety of cup and bottle holders, and a storage area. Air conditioning and optional AM/FM cassette stereo system create a comfortable and controlled work environment.

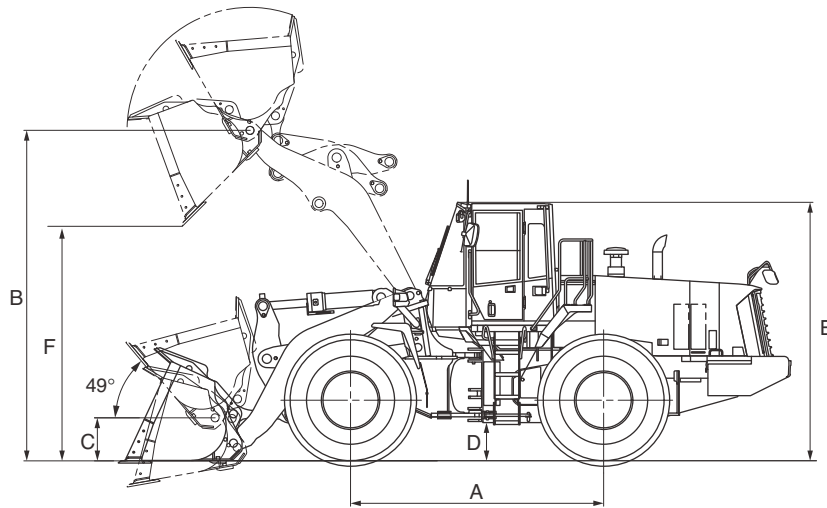
Additional cab features include:

- Low operator noise level leads the industry at 72 dB(A)
- Air suspension seat reduces fatigue and increases productivity
- Large cab glass area provides the best visibility in its class, for increased operational efficiency and productivity
- Speed limiter. Limits travel speed to 3rd speed





DIMENSIONS



Measured with 23.5-R25 (L3) tires and ROPS/FOPS Level 2 cab

Model	WA430-6		WA430-6 High Lift	
	Loading	Pushing	Loading	Pushing
Bucket capacity, heaped	5.7 m ³ 7.5 yd³	5.0 m ³ 6.5 yd³	5.7 m ³ 7.5 yd³	5.0 m ³ 6.5 yd³
Bucket width	3400 mm 11'2"	3048 mm 10'0"	3400 mm 11'2"	3048 mm 10'0"
Bucket weight	2563 kg 5,650 lb	2313 kg 5,100 lb	2563 kg 5,650 lb	2313 kg 5,100 lb
Net horsepower	172 kW 231 HP	172 kW 231 HP	172 kW 231 HP	172 kW 231 HP
Engine model	SAA6D114E-3	SAA6D114E-3	SAA6D114E-3	SAA6D114E-3
Breakout force	21202 kg 46,729 lb	21019 kg 46,326 lb	16612 kg 36,613 lb	16471 kg 36,302 lb
Static tipping load: straight	14587 kg 32,159 lb	14900 kg 32,848 lb	13620 kg 30,027 lb	13914 kg 30,675 lb
Static tipping load: 40° full turn	12615 kg 27,812 lb	12886 kg 28,408 lb	11779 kg 25,968 lb	12033 kg 26,529 lb
Tread	2200 mm 7'3"	2200 mm 7'3"	2200 mm 7'3"	2200 mm 7'3"
Width over tires	2820 mm 9'3"	2820 mm 9'3"	2820 mm 9'3"	2820 mm 9'3"
A Wheelbase	3300 mm 10'10"	3300 mm 10'10"	3300 mm 10'10"	3300 mm 10'10"
B Hinge pin max height	4165 mm 13'7"	4165 mm 13'7"	4654 mm 15'3"	4654 mm 15'3"
C Hinge pin height, carry position	520 mm 1'8"	520 mm 1'8"	700 mm 2'3"	700 mm 2'3"
D Ground clearance	436 mm 1'5"	436 mm 1'5"	436 mm 1'5"	436 mm 1'5"
E Overall height, ROPS Cab	3618 mm 11'10"	3618 mm 11'10"	3618 mm 11'10"	3618 mm 11'10"
F Dump clearance, max. height and 45° angle*	2782 mm 9'2"	2936 mm 9'8"	3271 mm 10'9"	3424 mm 11'3"
Reach at 2130 mm 7' and 45° dump angle*	2055 mm 6'8"	1897 mm 6'2"	2558 mm 8'4"	2400 mm 7'9"
Reach at max. height and 45° dump angle*	1391 mm 4'7"	1228 mm 4'0"	1498 mm 4'11"	1335 mm 4'5"
Reach with arm horizontal and bucket level*	2031 mm 6'8"	1940 mm 6'4"	2470 mm 8'1"	2379 mm 7'9"
Operating height, fully raised	5989 mm 19'8"	6197 mm 20'4"	6478 mm 21'3"	6686 mm 21'11"
Overall length, bucket on ground	8765 mm 28'9"	8541 mm 28'0"	9375 mm 30'9"	9151 mm 30'0"
Loader clearance circle**	15187 mm 49'10"	14808 mm 48'7"	14868 mm 48'9"	14510 mm 47'7"
Operating weight	20354 kg 44,873 lb	20082 kg 44,273 lb	21052 kg 46,412 lb	20780 kg 45,812 lb

* At the end of BOCE **Bucket at carry position, outside corner of bucket at the end of BOCE.

All dimensions, weights, and performance values based on SAE J732c and J742b standards. Operating weight shown includes lubricant, coolant, full fuel tank, ROPS cab, tires as indicated, operator, and full waste handler packages, plus recommended additional items and JRB® trash handling bucket with bolt-on cutting edge.



STANDARD EQUIPMENT

Refer to the regular WA430-6 specification sheets for a listing of all standard equipment.



OPTIONAL EQUIPMENT

- 3-spool valve, with lever and piping
- AM/FM stereo radio cassette
- Auxiliary steering (SAE)
- Engine pre-cleaner with extension
- Full rear fenders
- Limited slip differential (F&R)
- Single lever, multi-function loader and transmission control

Waste Handler Arrangement

Recommended base machine options:

- Engine pre-cleaner, ILOS
- Limited-slip differentials, ILOS
- Standard boom or high-lift boom ILOS

Arrangement Options

- 4th speed lockout
- Articulation guards
- Axle seal guards
- Boom cylinder and hose guards
- Front frame bottom guard
- Front frame step
- Front frame top rubber guard
- Front light guards
- Fuel tank guard
- High-debris cooling screen package
 - Perforated engine side doors
 - Perforated hood air inlet
 - Engine compartment seal package
- Ladder group, HD, LH and RH
- Light bar kit with beacon
- Powertrain bottom guard
- Rear light guards

- Waste handler bucket*
 - Loader style: 5.7 m³ **7.5 yd³**
 - Pusher style: 5.0 m³ **6.5 yd³**
- *JRB[®] buckets can only be ordered with waste handler packages
- Waste handler decal group
- Windshield guard

KOMATSU[®]