



Hydraulic Excavator Lineup



Advanced PC Series Hydraulic Excavators from Komatsu

Komatsu, one of the world's leading manufacturers of construction equipment, offers a wide range of hydraulic excavators to meet all your excavating job requirements. These tough excavators are equipped with many remarkable features, including low fuel consumption designs, efficient control systems, extra-comfortable operator compartments and refined external features.

In addition, every Komatsu hydraulic excavator is manufactured under our total production system. This includes the manufacture of everything from steel casting and vital hydraulic components to engine parts. You'll find Komatsu quality makes a difference throughout our hydraulic excavators.

Some of Komatsu hydraulic excavators' sophisticated features are introduced here.



A newly designed cab provides plenty of workspace and excellent visibility.

The 940 mm (3'1") wide cab meets ISO standards and passes the world's strictest regulations, providing ample work space and excellent visibility through the tinted glass window that not only softens strong sunshine but also increases the cooling efficiency of the optional air conditioner. Other features include a reclining seat with armrests, and headrest, a pull-up front glass window and an easy-to-clean floor (a floor mat is optionally available).

A control-valve-operated swing system enhances the smoothness of controls, light-touch wrist-control levers, and other devices in the cab.





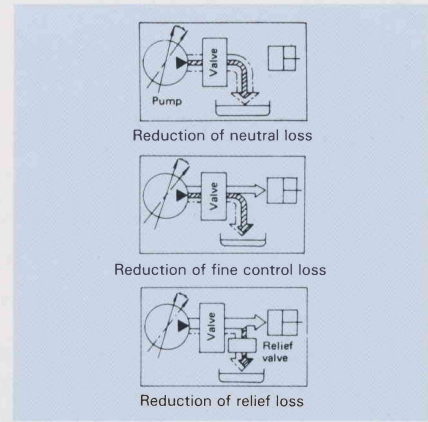
Two-mode selection system for high excavation efficiency.

The mode selection switch determines pump driving torque in either the STANDARD or LIGHT-DUTY mode. By choosing the best matched mode selection, operating efficiency is enhanced. The STANDARD mode is designed for general digging/loading operations. The LIGHT-DUTY mode makes it possible to maintain a short

cycle time while saving fuel. Choose this mode when the excavator is loading light materials, hoisting light loads, or doing slope-finishing work.

The advanced monitoring system.

The Komatsu monitoring system not only allows fast daily checks but also informs the operator of any abnormality during operation.

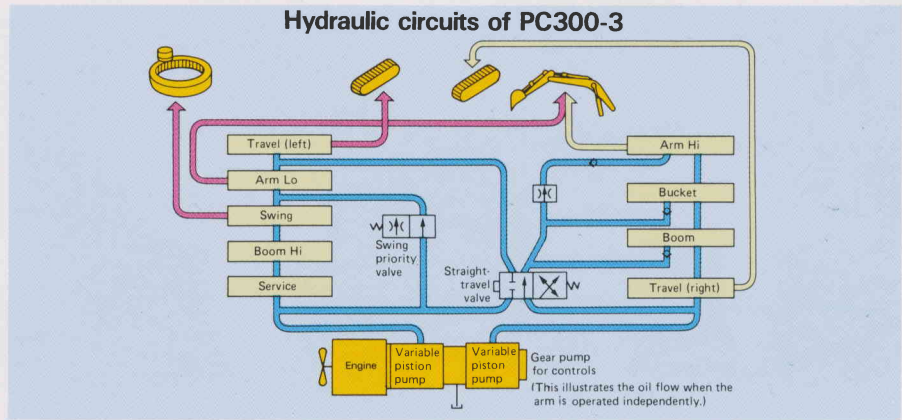


Komatsu's OLSS system minimizes various types of hydraulic losses.

The OLSS (Open-center Load Sensing System) is built into hydraulic circuits as a hydraulic subsystem that reduces three types of hydraulic losses (neutral, fine control and relief losses) and realizes full use of engine output. Depending on hydraulic oil flow and oil pressure, the OLSS controls oil output from piston pumps, minimizing the flow of unused oil.



The Komatsu-built diesel engine with a direct-injection system for reduced fuel consumption: Komatsu excavators make the best use of engine power thanks to the sophisticated power-efficient hydraulic system.



An arm merge circuit shortens cycle time.

An arm merge circuit makes it possible to perform smooth compound bucket movements and high-speed bucket/arm action, resulting in shortened cycle time. This feature makes each Komatsu hydraulic excavator one of the most productive excavators in its class—especially in leveling and slope-finishing where frequent arm action is required.

Straight-travel valve.

In case the work equipment is operated and/or swing action is performed during the machine travels, the straight-travel valve automatically goes into action to interlock the hydraulic circuits to the left and right travel motors. As a result, the excavator can maintain straight-forwarding since each travel motor can obtain the same amount of oil.

Full Choice of Komatsu Hydraulic Excavators

PC60-5 PC60U-5 PC60L-5

WT: 6300 ~ 7230 kg
(13,890 ~ 15,940 lb)
FH: 54 HP (40 kW)



PC80-3

WT: 8080 ~ 8630 kg
(17,810 ~ 19,030 lb)
FH: 64 HP (47.8 kW)



PC100-3 PC100U-3 PC100L-3

WT: 10700 ~ 13200 kg
(23,590 ~ 29,100 lb)
FH: 79HP (59 kW)



PC120-3

WT: 11600 ~ 12560 kg
(25,570 ~ 27,690 lb)
FH: 84 HP (63 kW)



PC150HD-3 PC150-3 PC150NHD-3 PC150LC-3

WT: 13900 ~ 16700 kg
(30,640 ~ 36,820 lb)
FH: 88 ~ 99 HP (66 ~ 74 kW)



PC180LC-3 PC180NLC-3

WT: 16400 ~ 17300 kg
(36,150 ~ 38,140 lb)
FH: 105 HP (78 kW)



PC240-3 PC240LC-3 PC240NLC-3

WT: 22800 ~ 25000 kg
(50,260 ~ 55,120 lb)
FH: 148 HP (110 kW)



PC280NLC-3 PC280LC-3

WT: 26300 ~ 28400 kg
(57,980 ~ 62,610 lb)
FH: 168 HP (125 kW)



PC300-3 PC300LC-3 PC300NLC-3

WT: 29000 ~ 32500 kg
(63,930 ~ 71,650 lb)
FH: 197 ~ 206 HP
(147 ~ 151 kW)



PC360LC-3

WT: 35700 ~ 37000 kg
(78,700 ~ 81,500 lb)
FH: 212 HP (157 kW)



PC1000-3 PC1000LC-3

WT: 95000 ~ 106000 kg
(209,440 ~ 233,690 lb)
FH: 542 HP (405 kW)



PC1600-3

WT: 160000 ~ 165000 kg
(352,740 ~ 363,760 lb)
FH: 808 HP (604 kW)



PC400-3

WT: 42000 ~ 43400 kg
(92,590 ~ 95,600 lb)
FH: 266 ~ 274 HP
(199 ~ 207 kW)



PC1600-3

WT: 162000 ~ 166000 kg
(357,150 ~ 365,960 lb)
FH: 808 HP (603 kW)



PW60-3

WT: 6540 ~ 6810 kg
(14,420 ~ 15,010 lb)
FH: 66 HP (52 kW)



PW100-3

WT: 10,900 ~ 11700 kg
(24,030 ~ 25,790 lb)
FH: 99 HP (73.6 kW)



PW150-3

WT: 15200 ~ 15700 kg
(33,500 ~ 34,600 lb)
FH: 85 HP (63 kW)



WT: Operating weight FH: Flywheel horsepower (SAE J1349)

**PC180LC-3 PC180LLC-3
C-3 PC180NLC-3**

WT: 16400 ~ 19100 kg
(36,160 ~ 42,110 lb)
FH: 105 HP (78 kW)



**PC200-3
PC200LC-3**

WT: 18000 ~ 20600 kg
(39,680 ~ 45,410 lb)
FH: 118 HP (88 kW)



**PC210-3
PC210LC-3**

WT: 18700 ~ 21400 kg
(41,230 ~ 47,180 lb)
FH: 123 HP (92 kW)



**PC220-3
PC220LC-3**

WT: 22000 ~ 24400 kg
(48,500 ~ 53,790 lb)
FH: 148 HP (110 kW)



PC360LC-3

WT: 35700 ~ 37800 kg
(78,700 ~ 83,330 lb)
FH: 212 HP (158 kW)



**PC400-3
PC400LC-3**

WT: 40000 ~ 44300 kg
(88,180 ~ 97,660 lb)
FH: 266 ~ 274 HP (199 ~ 207 kW)



**PC650-3
PC650LC-3**

WT: 65000 ~ 70700 kg
(143,300 ~ 155,870 lb)
FH: 404 HP (302 kW)



PC400-3

WT: 42000 ~ 43400 kg
(92,590 ~ 95,680 lb)
FH: 266 ~ 274 HP
(199 ~ 207 kW)



PC650-3

WT: 67000 ~ 71300 kg
(147,710 ~ 157,190 lb)
FH: 404 HP (302 kW)



PC1000-3

WT: 98000 ~ 103000 kg
(216,050 ~ 227,070 lb)
FH: 542 HP (405 kW)



PW150-1

WT: 15200 ~ 15500 kg
(33,510 ~ 34,170 lb)
FH: 85 HP (63 kW)



PW210-1

WT: 19000 ~ 19400 kg
(41,890 ~ 42,770 lb)
FH: 153 HP (114 kW)



Other sophisticated features

Full-open type machine cover: Hinged hood and side covers allow quick access to internal components for easy maintenance.



L/LC (long crawler) models: Extended crawlers and wide shoes keep them stable as they carry out heavy excavation work on rough terrain. Their low ground pressure enables them to maneuver in relatively soft terrain, thus diversifying applications.

Travel motors are of the in-shoe type, with hydraulic piping built into the X-leg type center frame; this prevents damage due to external obstructions.

A wheel type model is also provided. Thanks to its high maneuverability, it can move from one jobsite to another in a short period of time without the need for a carrier.



Materials and specifications are subject to change without notice.

KOMATSU