



Tracked harvester 242HV 242HVT



www.neuson-ecotec.com



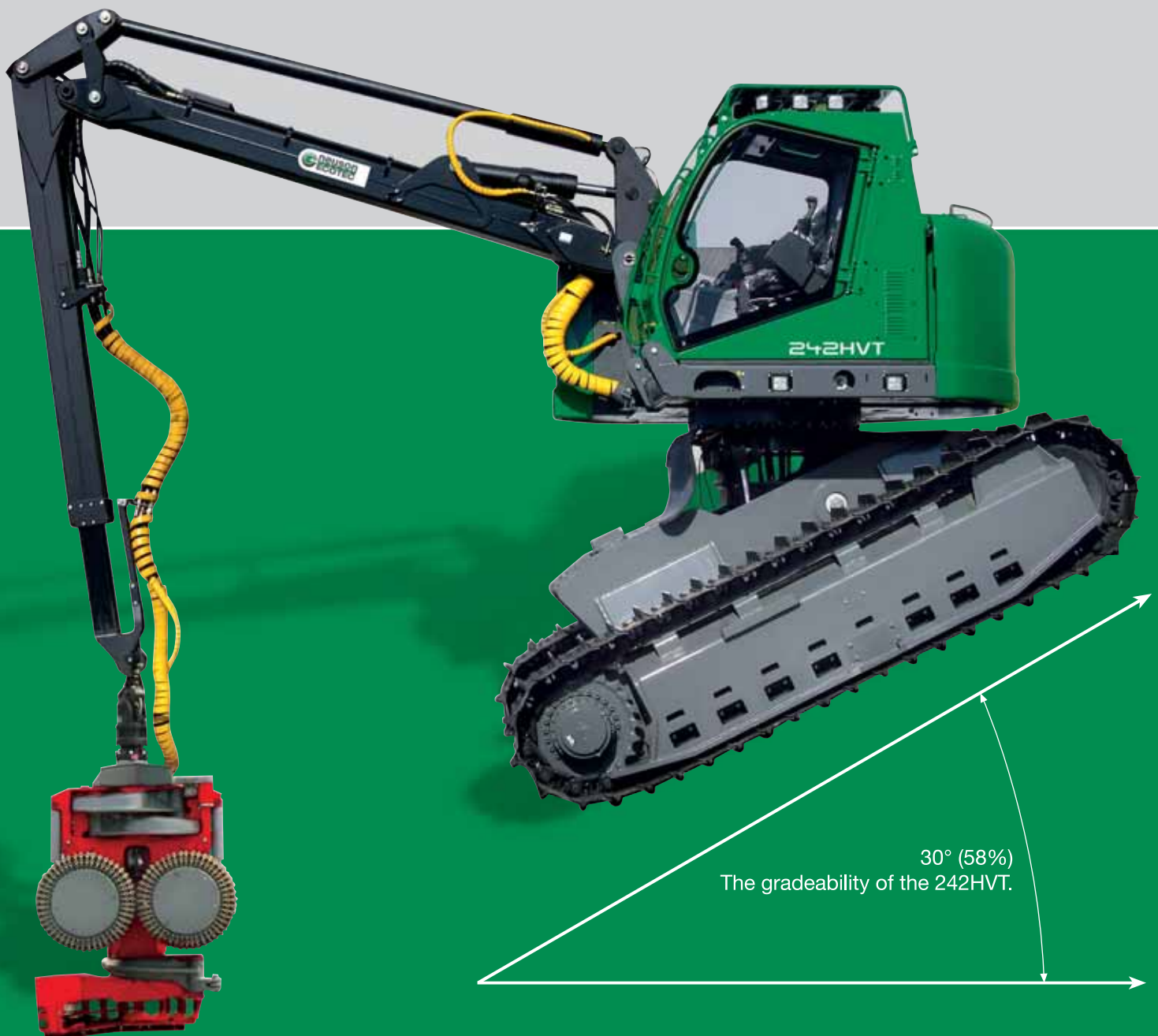
Best performance - highest comfort

A roomy cabin, powerful common-rail diesel engine, a strong forest crane, separate hydraulic pump for high performance of the harvester heads, tilting uppercarriage and excellent gradeability – the new 242 distinguishes itself as the biggest and strongest member in our tracked harvester product range.

A machine that guarantees high stability by its wide track base and that excels in tight selective-

harvesting applications due to its short tail swing radius, as well as clear-cutting operations.

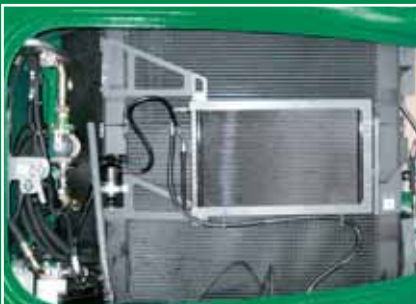
The flexibility and user-friendliness of this machine is one of the utmost design considerations to meet our customers requests. The 242 is produced in standard or tilt version to cope with all terrain conditions.



242HV

Working area / Cabin

An ergonomic operating station is important to obtain a pleasant working environment. This is realised by installing an air suspension seat with long oscillation stroke and broad armrests for comfortable seating. The high performance air conditioning system provides an enjoyable room climate on hot summer days. Trays are conveniently located on all sides of the cab interior to store equipment and accessories. All windows in the cab are made of Lexan to protect you and the cab is ROPS, FOPS, OPS approved for forest harvesting use.



Cooling

The generously dimensioned hydraulic oil cooler guarantees ample cooling performance even in the most difficult operating conditions and high summer temperatures. For the air conditioning system a separate radiator is mounted.

Service friendliness

The well known service friendliness of our machines is also demonstrated by the 242 with its front-wards tilting cab and one generously dimensioned service platform. Both the cab and the platform are hydraulically tiltable. Service work can easily be accomplished with ample space available and logical positioning of all components.



Diesel engine

Power is provided by a 6-cylinder common-rail diesel engine which achieves its highest torque at 1900 rpm. Despite this concentrated strength of 183 KW (245 HP), the engine runs incredibly smooth and is easy on diesel fuel consumption. Low fuel consumption will keep the operator happy even while meeting environmental emission standards.

Hydraulic system

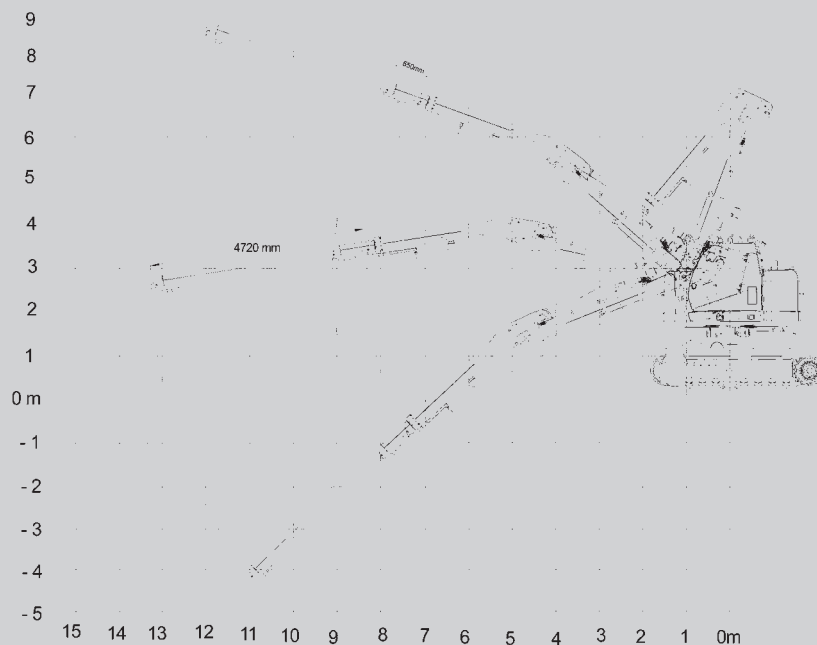
The hydraulic design of the 242 is the successful realization of a three-pump system. The harvester head and base machine are supplied by independent hydraulic pumps. The hydraulic performance of the 242 base and parallel crane is assured by double in-line mounted pumps with negative control – this system secures the optimum supply of oil to all components even during the most demanding load applications.



Crane

A high-performance machine needs a high-performance crane. The Neuson parallel crane perfectly coordinates the harvester head to the base machine. Its parallel arm facilitates safe and extremely productive operation over its entire reach.

242HVT



Crane

To address all requirements concerning the vast range of operating conditions, the 242 is also available with an optional crane which provides optimal working geometry and a longer reach. See the diagram to your left.



Leveling adjustment

The developed and often approved of, leveling system is also used on the 242. The large-dimension tilt cylinders makes leveling of $+25^\circ$ in forward direction and $\pm 15^\circ$ to each side possible.



Tail swing radius/Ground clearance

Because of the 242's extra-high ground clearance, obstacles such as stumps and rocks do not have to be driven around. Working in narrow spaces is easily done due to the short tail swing radius of the machine.

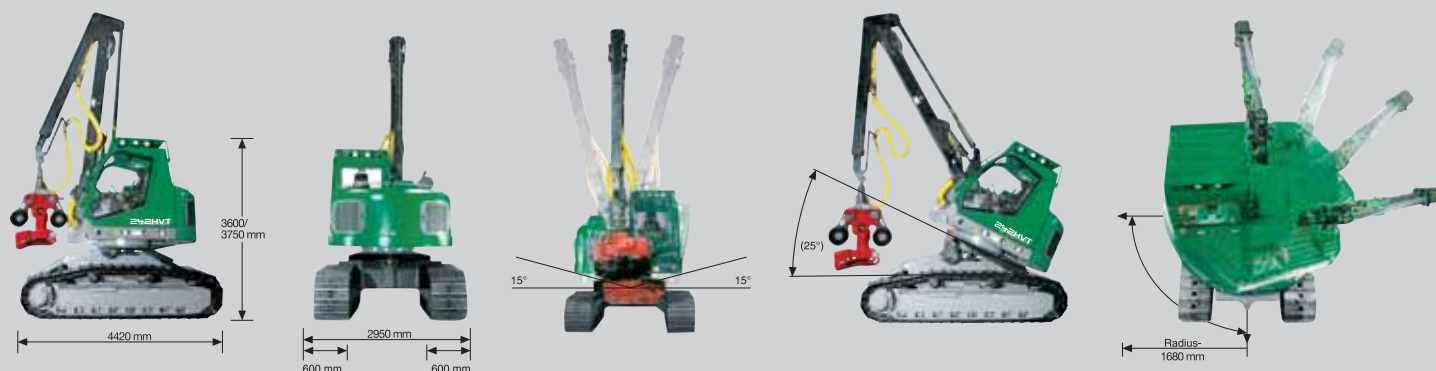
TECHNICAL DATA

242HV

242HVT

	Main data	total weight with cabine height/width/length slewing moment drawbar pulling force crane	23.5 to 355 / 295 / 920 cm 64 kNm 27.2 to Parallel crane Neuson	24.7 to 360 / 295 / 920 cm 64 kNm 27.2 to Parallel crane Neuson
	Under-carriage	travelling speed upper carriage swing speed upper carriage turn angle gradeability standard steel tracks track length ground clearance ground contact pressure upper-structure tilt system	1.44 km/h and 3.54 km/h 8 rpm endless 20° (38%) cont., 30° (58%) interm. D6 single grouser, 600mm width 4420 mm 760 mm 0.44 kg/cm2 -	1.44 km/h and 3.54 km/h 8 rpm endless 30° (58%) D6 single grouser, 600mm width 4420 mm 760 mm 0.46 kg/cm2 25° to the front, +/- 15° to each side
	Engine	engine model type of engine cooling total displacement speed motor power output battery alternator fuel tank capacity	John Deere 6068HF485 6-cyl. turbo diesel engine water cooled 8100 ccm 1900 rpm 183 KW (245 HP) 2x 135 Ah 24 V / 140 A 700 liter	John Deere 6068HF485 6-cyl. turbo diesel engine water cooled 8100 ccm 1900 rpm 183 KW (245 HP) 2x 135 Ah 24 V / 140 A 650 liter
	Hydraulic system	hydraulic pump basic machine flow capacity (working hyd.) working and driving pressure hydraulic pump harvester head flow capacity harvester head working pressure harvester head hydraulic oil tank capacity return filter high pressure filter	Double variable pump negative control 2x 152 l/min 300 bar / 330 bar Variable pump P/Q control 380 l/min 330 bar 390 liter standard 2 pcs. á 20 µm standard 10 µm	Double variable pump negative control 2x 152 l/min 300 bar / 330 bar Variable pump P/Q control 380 l/min 330 bar 390 liter standard 2 pcs. á 20 µm standard 10 µm
	Harvester aggregates	AFM Foresteri Keto Lako Logmax Viking Waratah	60HD, 75 F30RHS 500HD 63HD 7000, 9000 650 H290, HTH470HD, H480	60HD, 75 F30RHS 500HD 63HD 7000, 9000 650 H290, HTH470HD, H480
	Options	for 242HV & 242HVT		additionally for 242HVT
		<ul style="list-style-type: none"> • service platform • special paint color RAL • hydraulic bio oil • telescopic boom extension • central lubrication for upper-carriage • vacuum pump • Xenon lamps • long crane for 14m machine reach 		<ul style="list-style-type: none"> • fuel preheating • heated seat • auxiliary heating system • control unit Logmate 402 • sun blend foil • anti-theft protection • automatic upper carriage leveling • dozer blade

Additional equipment as well as harvester heads on request.



Neuson Ecotec GmbH

Actualstraße 32

4053 Haid

Austria

Tel.: +43 / (0)7229 / 78 000-0

Fax: +43 / (0)7229 / 78 000-100

office@neuson-ecotec.com

www.neuson-ecotec.com