

FENDT

Fendt 1000 Vario

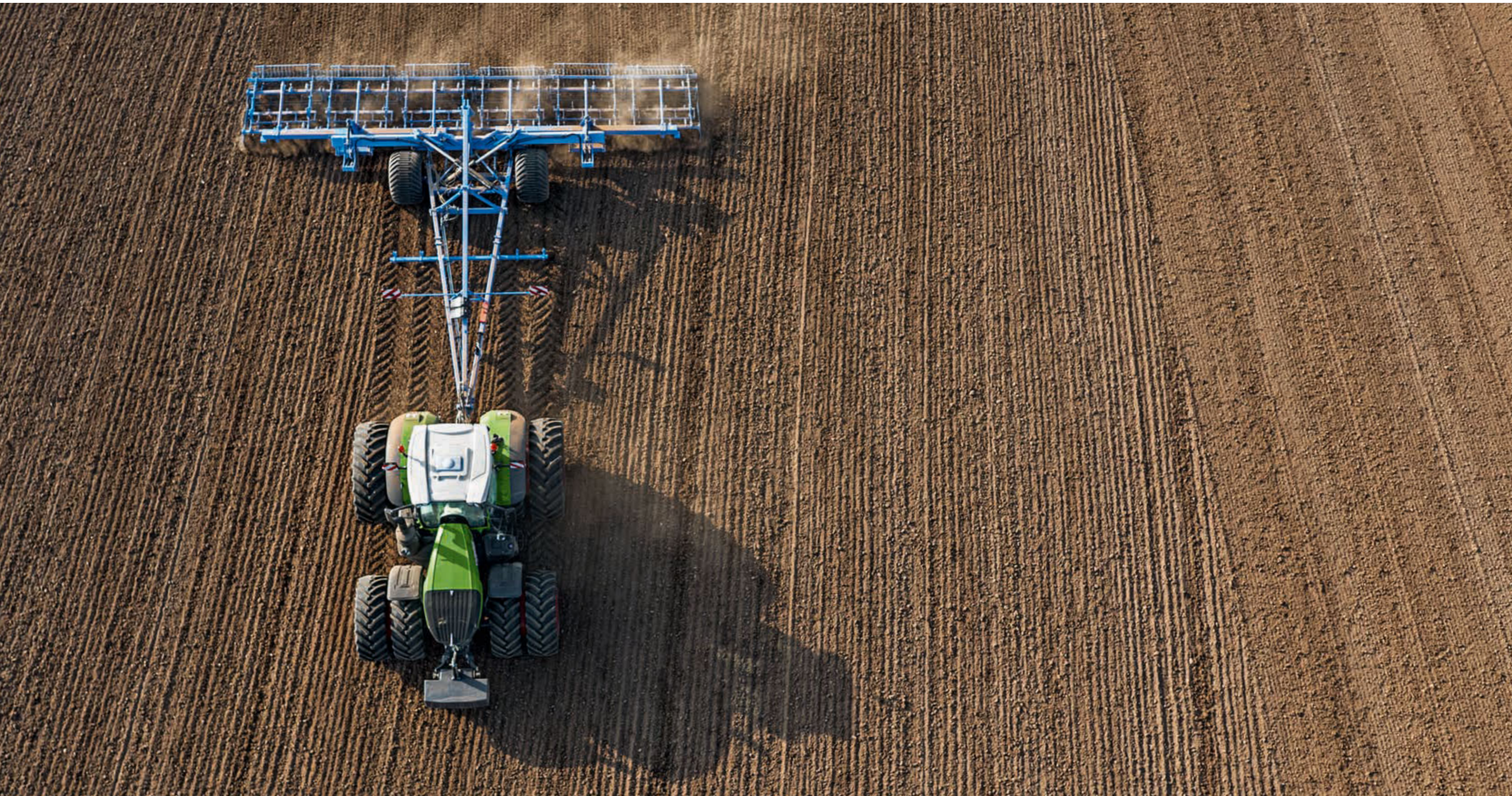




Watch the Fendt 1000 Vario film now.
www.fendt.com/1000-Film

500 hp for your daily Meisterwerk. Fendt 1000 Vario.

Big. Strong. Unique. Teamed up with leading-edge Fendt technology, a German Meisterwerk. Experience true strength, full traction, masterful controls and intelligent connectivity with the new Fendt 1000 Vario.



The Number One for heavy draft work.

The Fendt 1000 Vario converts its power. Its large tyres, intelligent ballasting and tyre pressure assistants, as well as unique, variable four-wheel drive, deliver the right amount of grip in any situation – along with outstanding manoeuvrability. And it is powerful for more than draft work.

Most powerful standard tractor with maximum modularity

The Fendt 1000 Vario occupies a new segment with its power output. Its design as a high-performance standard tractor brings together all the advantages for operations in the field and on the road.

- New power segment 380 – 500 hp
- 14 t unladen weight for up to 23 t permissible overall weight
- 60" (1.5 m) track-capable*
- Fully roadworthy up to 60 km/h*
- Optional rear PTO 1000, 1000E and 1300
- Optional rear linkage
- All hitch systems in modular design
- Optional reversing driver station

* Value depends on country-specific, legal regulations
 ** Depends on country variant



Maximum performance 365 days a year
 All components, from the engine to the transmission and up to the fan and hydraulics, were designed especially for enduring power during demanding operations and coordinated for high power transmission with the lowest consumption. With all its strengths, the Fendt 1000 Vario also convinces through its high manoeuvrability, low vehicle weight and high payload. The newest software solutions and diversity of interfaces pave the way for connected services, which boost operational efficiency through fast data analyses and maintenance options while still working in the field.

So that daily work becomes a Meisterwerk

	kW	hp
Fendt 1038 Vario	291	396
Fendt 1042 Vario	320	435
Fendt 1046 Vario	350	476
Fendt 1050 Vario	380	517

Rated power to ECE R120

FENDT ID LOW ENGINE SPEED CONCEPT

High power – low fuel consumption. Fendt iD.

Those who drive a Fendt 1000 Vario no longer need to think about driving in the best speed range. They are automatically ideal.

Low engine speed concept Fendt iD

The Fendt 1000 Vario always runs in the maximum torque range for the lowest specific fuel consumption, which means that high power is already delivered at low engine speeds. The “high torque, low engine speed” concept forms the basis for the perfectly integrated design of all vehicle components, including the engine, transmission, fan, hydraulics and all secondary loads, to work at low engine speeds.

High torque – low fuel consumption

The Fendt iD low engine speed concept results in permanently low fuel consumption and an extended service life. The speed band of the Fendt 1000 Vario ranges from 650 rpm to 1700 rpm. In the main working range, the speeds range from 1100 to 1500 rpm, which is gentle on the components and lowers consumption. The engine of the Fendt 1050 Vario already delivers an impressive 2.400 Nm of torque at 1100 rpm.

The way Fendt iD works

The entire drive technology of the Fendt 1000 Vario works at an economic optimum. The high-capacity engines with VTG turbocharger unfold their enormous power potential efficiently at low engine speeds. Transmission and variable four-wheel drive ensure ideal power distribution within the optimal consumption range. The Concentric Air System (CAS) cooling concept with high-performance push fan cools all heat exchangers appropriately and achieves an additional increase in the system’s overall efficiency. All consumers, such as the air-conditioning, air compressor or alternator, are coordinated for low wear through low engine speeds.



THE ENGINE OF THE FENDT 1000 VARIO

Supreme performance in heavy draft work.

The new high-horsepower tractor is powered by a strong engine, which delivers power dynamically at low engine speeds and has a big impact on large operations. The operating costs remain low.

380 to 500 hp

It is powered by the highly efficient MAN six-cylinder engine. With a 12.4-litre displacement, it already has a high torque in the low engine speed range: For the Fendt 1050 Vario, the maximum torque of 2.400 Nm is already available at 1100 rpm – perfect for heavy draft work. This fast high-horsepower tractor reaches its top speed of 60 km/h at only 1450 rpm, 40 km/h at a fuel-saving 950 rpm.

Economical, low-emission, environmentally friendly

The high SCR technology reduces nitrogen oxides especially efficiently in combination with the external, cooled exhaust gas recirculation AGReX. The Fendt 1000 Vario complies with the latest emissions standard EU Stage 4 / Tier 4 final with SCR exhaust technology without diesel oxidation catalyst (DOC) or diesel particulate filter (DPF). The Fendt 1000 Vario is especially economical through its efficient use of fuel and the need-based control of the AdBlue injection.

Turbo efficiency

The tractor engine, which has proven its worth widely in trucks, has been perfectly adapted to long periods of full-load operation in keeping with load spectrums found in heavy-duty field use. The charging is done through the VTG turbocharger and results in high torques already at low engine speeds. Low engine noise level and exhaust brake via the VTG, which is gentle on the brakes and minimises wear.

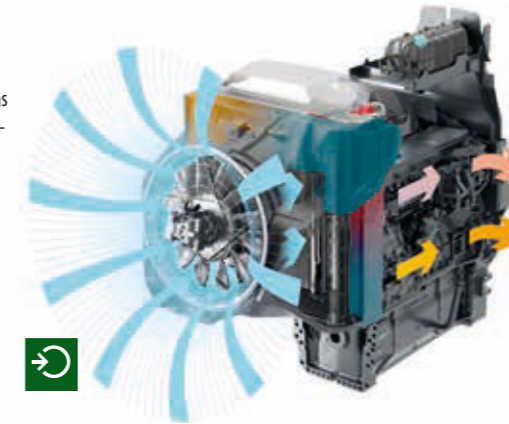
Unique cooling system

Efficient cooling when hot, provided by the specially developed fan and the Concentric Air System (CAS) cooling concept. With this system, a novel, high-performance push fan located in front of the radiator unit takes in cool, dense air, accelerates it powerfully via a concentric intake and pushes it through the radiator. The CAS has its own hydrostatic drive, so it can always deliver ideal cooling power to each component according to need, independent of the engine speed. The fan is tilted upwards, which prevents harvesting residue from being sucked up from the ground.

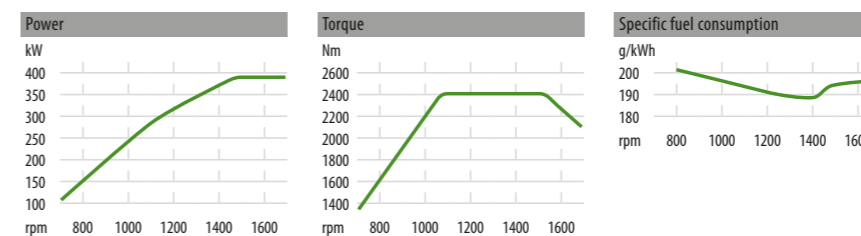


The 12.4l MAN engine with common rail reaches a high injection pressure of 1800 bar and is therefore very efficient.

Through the minimised fan speeds, as well as exact manufacturing with small gap tolerances, the CAS achieves high cooling capacity with an especially low noise level.



The coolant level and the degree of air filter contamination are shown in the Varioterminal.



FENDT VARIODRIVE – THE NEW DRIVE TRAIN

Drives your success – at full power

The stepless Vario transmission has been setting the standards for tractor drives for more than 20 years. Now a newly developed, comprehensive drive train with variable four-wheel drive drives the Fendt 1000 Vario to the top.

From Vario to VarioDrive

The Fendt Vario epitomises a continuously variable, dynamic driving experience that delivers power at any speed from 0.02 to 60 km/h. The new drive in the Fendt 1000 Vario was specially developed for the purpose of effectively delivering high engine power in any situation, regardless of soil and surface conditions, while keeping engine speeds particularly low. The solution: Fendt VarioDrive – the drive train that drives both axles independently for the first time.

Power from 500 hp: variable four-wheel drive

Conventional four-wheel drives usually have a fixed torque ratio between the front and rear axle. Fendt VarioDrive enables a variable four-wheel drive. Torque is generally distributed freely and independently across the two axles from two transmission outputs. Using a smartly controlled four-wheel clutch, torque is shifted between the axles as required as part of the Fendt Torque Distribution system.

Meisterwerk with grip

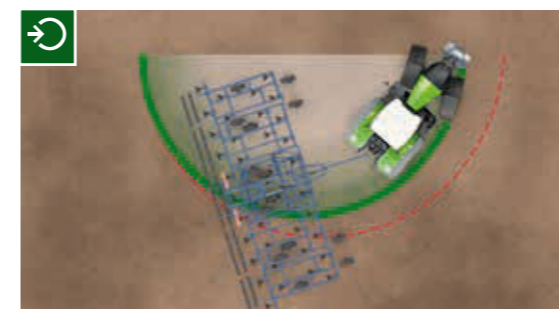
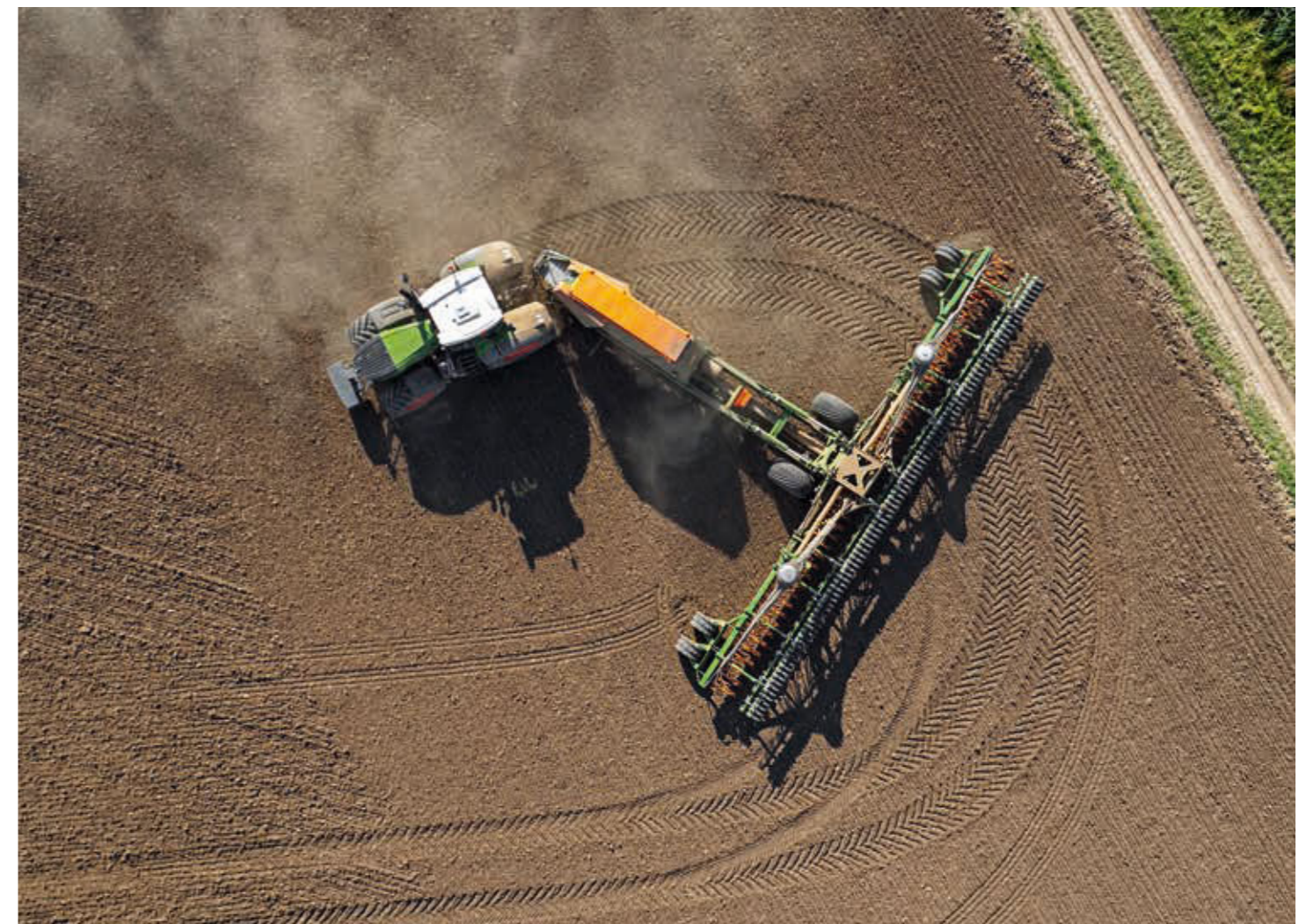
During field operations, torque is transferred flexibly to the axle. The result is tremendous pulling power. As the speed increases, a clutch completely decouples the front axle drive at approx. 25 km/h – this eliminates drag losses in the drive train and increases efficiency.

Tightest turning circle thanks to pull-in turn

As the variable four-wheel drive means that there is no fixed lead ratio, the front wheel drive is capable of pulling the tractor actively into turns (so-called “pull-in turn” effect). This effect alone reduces the turning circle in the field by up to 10 percent. VarioDrive minimises the otherwise usual tyre wear on the front tyres that is caused by cornering on firm substrates.



New, larger high-capacity hydrostats with 370 cm³ ensure very high transmission efficiency



Small turning radius thanks to the “pull-in turn” effect, e.g. 6.97 m for the Fendt 1038 Vario with standard tyres.



All functions are arranged simply and straightforward on the backlit membrane keypad according to the tried and tested Fendt operating logic.

THE HYDRAULICS FOR THE FENDT 1000 VARIO

Everything flows

With its modular hydraulic system for all coupling sizes, the Fendt 1000 Vario can operate countless implements. It delivers the perfect oil pressure and oil flow for several consumers.

Versatile coupling system

The Fendt 1000 Vario already delivers a high hydraulic capacity of 165 l/min and 140 l/min in the basic equipment level. The flexible coupling housing permits operations with different coupling sizes: 1/2", 3/4" and 5/8" FFC (Flat Face Coupling). The third and fourth control unit in combination with 3/4" and 5/8" FFC couplings, can be supplied with a flow volume of up to 170 l/min. All couplings are easy to operate and can also be coupled under pressure on both sides (DCUP).

Coupling system with many advantages

On the one hand, the flexible system enables fast machine changes independent of coupling size. On the other, the fleet can be gradually converted to larger valves. All benefits of flat-sealing FFC couplings are additionally provided, including large 5/8" diameters for higher throughput, leakage-free coupling, greater efficiency due to lower pressure losses, easy cleaning and longer service life due to effectively minimised contamination. All valves have a breakaway function without pressure loss.

Twice as strong

The Fendt 1000 Vario features not only load-sensing pumps with a capacity of 165 l/min or 220 l/min, but also high-performance hydraulics with 430 l/min for exceptionally high demands. As two pumps supply two independent circuits with 220 l and 210 l respectively, two control pumps provide oil to several consumers, which are controlled via up to six double-acting valves at the rear and one double-acting valve in the front.

Oil flow according to need

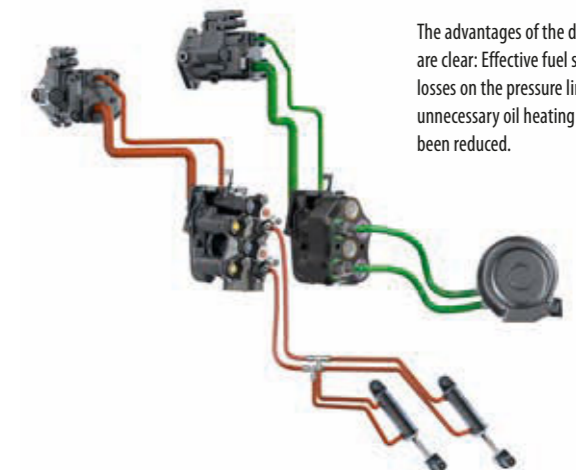
Both control pumps supply their respective consumers with optimal volumes of oil at the optimal pressure via separate oil circuits. Pneumatic seed drill fans, for example, require high flows at low pressure, while other consumers simultaneously connected to the second circuit, e.g. steering, power lift, chassis or track markers, require high oil pressure at low flow volumes.



The interchangeable male couplings can be simply screwed into the coupling block and replaced as required for the implement to be used.



Two valves can be prioritised for the dual-circuit high-capacity hydraulics.



The advantages of the dual-circuit hydraulics are clear: Effective fuel savings since throttle losses on the pressure limiting valve, and the unnecessary oil heating associated with it, have been reduced.



Take a 360° view inside the Fendt Life Cab and experience the exceptional all-round visibility. www.fendt.com/LifeCab

FENDT LIFE CAB

Comfort leads to success.

The Fendt 1000 Vario cab is the perfect place for operators who want to achieve amazing feats with their tractors while staying comfortable and relaxed.

The first impression counts, the second makes the difference

The perfect combination of state-of-the-art controls and comfort is called Fendt Life Cab. Even the first step inside the cab of a Fendt 1000 Vario is impressive, as the redesigned Life Cab combines high-quality materials with proven organisation and outstanding functionality of all elements.

A new experience of space and visibility is enhanced even further by numerous little things that make everyday work just that bit more pleasant.

Field work with comfort factor

The Fendt 1000 Vario already makes climbing in easy: Wide steps with side lighting lead upwards. All the hand grips are intuitively correctly placed. The soft touch surface of the interior panelling creates a pleasant atmosphere and is resistant against dirt and dampens noises. The new comfort seats are real eye-catchers with their black leather cover for both the driver and passenger seats. The adaptive backrest of the Dualmotion comfort driver seat swings along when looking over one's shoulder.

New visibility range

The Fendt 1000 Vario tows the largest and widest implements, which the operator has in full view through the large windows. The new design of the cab offers up to ten percent more visible area than the previous Fendt high-horsepower tractor cabs. The roller shades integrated in the roof on the front, rear and right side window, offer sun protection with one hand movement. Free visibility, even when it rains: In addition to the 300° wiper for the front, a 220° wiper including spray nozzle is now available for the right side.

Practically indispensable ...

... are numerous new features for better and clearer organisation. Several large bottles can be secured in the Life Cab as well as phones and documents. The cooled storage compartment can be supplemented with a large, removable cool box. When the comfort passenger seat is folded down, it is transformed into a table with clips for papers. The reversing driver station is ideal for milling or chopping operations, where the entire driver station, including all operating elements are simply turned 180°, quickly and easily.

Fendt VarioDoc brings your office on board: All work data are available in the field record in near real-time.



The high-capacity automatic climate control with twin blowers and larger air nozzles keep the Life Cab pleasantly cool, even at temperatures around 45° C.



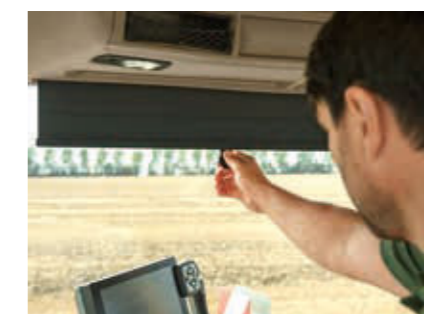
Practical for front mounted implements: The new camera integrated in the bonnet captures the view to the lower links and transmits the image to the Varioterminal.



The wide-angle mirrors can be moved freely and extend the viewing angle towards the back.



The front and rear window are heated, which is a big advantage when operating with the reversing driver station.



Precise sun protection with one hand movement, also on the right-hand side window.



You can make hands-free phone calls in the Fendt 1000 Vario, and in best quality: The flexible swan neck microphone keeps both hands free and the acoustics are perfect.



Discover the new Variotronic in the Fendt 1000 Vario now. www.fendt.com/Präzision

THE NEW VARIOTRONIC IN THE FENDT 1000 VARIO

New paths for a higher yield: Connected precision farming.

Fendt Variotronic like never before

The Fendt 1000 Vario features state-of-the-art software solutions that are perfectly integrated with each other to perfect individual steps to a masterful whole. Starting from the new, open-system guidance system up to the variable application rate, Fendt Variotronic solutions cover the entire work day – and night. The focus here is always on simple operability and the absolute reliability of all the systems.

The new Fendt VarioGuide guidance system

With Fendt VarioGuide you can drive reliably and accurately without actively steering, even in difficult reception conditions. With the new version of Fendt VarioGuide, you can choose from the GNSS receiver NovAtel® or Trimble®. A number of correction signals are supported, depending on the receiver, for example, EGNOS/WAAS or RangePoint™ RTX™, CenterPoint RTX™, NTRIP. Existing Trimble® RTK infrastructures, such as NTRIP can continue to be used. Even without a correction signal, VarioGuide works reliably for up to 20 minutes with RTK accuracy via Trimble xFill technology.

SectionControl guarantees that there is no overlapping

With the fully automatic SectionControl, you can always plant seeds, spread fertiliser or apply pesticides precisely in the right spot. This prevents double treatment and distances are automatically maintained. With the aid of the SectionControl assistant, you can set the correction values for each implement, quickly and easily. The switch on and off points can be set precisely from the very beginning, which automatically results in economical application.

Documentation and variable application rate with VarioDoc and VRC

The new solution for precision farming, variable rate control function (VRC), is now available in combination with VarioDoc Pro. The need for operating inputs, such as seeds, fertiliser or pesticides, is shown on application maps, which can be called up during operation and automatically executed. The big advantage: Operating inputs can be defined and planned in the field database and then applied with utmost precision.

The data from the field is saved in the field database by VarioDoc. VarioDoc Pro also permits recording of GPS position data and data transfer in near real-time



An ergonomic control centre comprising a 4-in-1 Varioterminal, multi-function joystick, crossgate lever, EPC power lift module, valve control and membrane keypad gives you easy access to everything you need.



The Variotronic[®] headland management saves all the procedures when performing a turning manoeuvre. Variotronic[®] automatic triggers the sequences precisely at the right place.



You can control ISOBUS-capable implements via the Variotronic Implement Control, directly with the joystick or Varioterminal.

AgCOMMAND™ AND FUSE CONNECTED SERVICES

Connectivity that adds more value

You can plan and control your fleet for optimal utilisation using the AgCommand™ telemetry system. You can increase operating time through service and maintenance offerings per remote access with Fuse Connected Service.

Efficient from tractor up to fleet

The operating strength of your fleet is optimised as soon as the machines are connected effectively to each other. The newest interfaces and software solutions already permit machine data to be called up independent of location today, which enables immediate reaction. This increases the reaction and operating times of your entire fleet at the push of a button. If you also control additional services via remote access, you can achieve even higher machine utilisation.

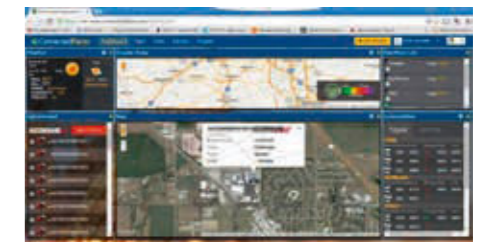
AgCommand™ fleet management

The AGCO AgCommand™ telemetry system transfers important machine data in near real-time for active fleet management. Significant here are the fuel consumption, speed, operating hour counter, engine speed, draft requirement, PTO speed and the outside temperature. Based on this data, the settings can be adapted and optimised during operation and further measures can be planned in advance.

The new value of the connection – Fuse Connected Services

The Fendt 1000 Vario opens a new world – for performance and operating times. It sets the starting point for new connection technologies, to increase efficiency and machine availability. United under the name Fuse Connected Services, the machine management, technology, services, diagnostics and consultation complement each other to optimise operations. The AGCO Connectivity Module (ACM), the integral telemetry unit for the entire data transfer, forms the interface between the tractor and Fendt service partner.

Fuse Connected Services permits connection to your Fendt service partner to minimise downtime.



Third-party telemetry portals, e.g. Trimble Connected Farm, can additionally be integrated via the open AgCommand™ API interface. AgCommand™ and the machines communicate via the normal GSM mobile network or, if not available, over Iridium satellite radio.



FENDT VALUE ADDED SERVICES

The service concept of the future.

What this means for you: Economy, operational reliability and retention of value that you can count on. In short: Fendt 1000 Vario.

A sure calculation

The added value of an investment becomes apparent in the relation between yield and overall operating costs. Transparency, planning reliability and a higher yield count here. That is why the unbeatable performance of the Fendt 1000 Vario is accompanied by a comprehensive service package:

- Connected Premium Services to guarantee a sustainable return on investment
- Tailored financing models (Fendt StarService financing)
- Transparent and flexible rental models (Fendt StarService rentals)
- Calculable operating costs through economic consumption, high uptime, higher performance
- Clear cost reduction, for example, through longer maintenance intervals of up to 2,000 operating hours

Quality for maximum reliability

The long lifetime of our machines makes us proud. We are very proud of our machines' long service lives, as it is the best proof of their quality, which we continually strive to improve. Your tractor's retention of value begins with the use of the best components, first-class workmanship and strict quality testing. Because we trust in our high quality standards, we offer an extended warranty of up to three years on all parts for our maintenance contract. Retention of value also includes the latest software, which is updated at no charge every time the machine is serviced.

Maintenance without waiting – Fuse Connected Services

A comprehensive range of error diagnostics, troubleshooting and maintenance options via remote terminal access makes it easy to address issues in the Fendt 1000 Vario well before they become a problem. For example, your certified Fendt dealer can upload software updates with your approval as part of the Fuse Connected Services. Preventative diagnostics, monitoring of the machine state as well as ad-hoc consultation and training improve running operations, no matter where the tractor is currently working.

With Fuse Connected Service, you can call up the diverse consultation and service features offered by your Fendt dealer directly over the Varioterminal on your tractor. This way you can increase uptime during operation.



An up-to-date tractor always has the highest value. At Fendt, you get the latest software update for your Fendt for free when you go in for servicing.





Discover everything about the perfect grip.
www.fendt.com/Grip

FENDT VARIODRIVE – THE DRIVE

The success factor for grip

The higher the traction, the better the tractor's power transmission. The result is high efficiency and less soil compaction. All of this already begins in the drive train.

VarioDrive drive train – a Meister of power distribution

The new drive train design allows torque to be optimally distributed to the front and rear wheels to deliver outstanding traction and traction. The drive unit is based on a hydraulic pump and two hydraulic motors. The first hydraulic motor delivers consistent torque to the rear axle between 0 and 60 km/h via hydrostatic-mechanical power splitting. The second hydraulic motor serves the front axle. Through feedback to the rear axle, from the ground or through the intelligently controlled four-wheel clutch, the front axle drive also becomes part of the hydrostatic-mechanical power splitting.

Power distribution through Fendt Torque Distribution

The flexible torque distribution of the variable four-wheel drive is achieved through a T-piece, which is located between the hydraulic pump and the hydraulic motors for the front and rear axles. It acts as a hydrostatic differential between the axles and permits the oil flow between the pump and hydraulic motor to be adjusted freely. As a result, there is no tension. If needed, torque can be automatically shifted from one axle to the other via the intelligently controlled four-wheel clutch. Frictional loss and wear are reduced effectively.

Fendt VarioGrip for the perfect tyre pressure

Due to their large diameter of up to 2.35 metres, the rear tyres on the Fendt 1000 Vario have a very large contact area, which has a positive impact on traction and therefore pulling power. This always includes having the right tyre pressure. With the integrated tyre pressure regulation system Fendt VarioGrip, the tyre pressure can be adjusted with a click in the Varioterminale. Air is filled into or released from the tyres while driving. Compared to operations with unadjusted tyre pressure, you can achieve up to 10% more pulling power and cover up to 8% more area with up to 8% lower fuel consumption*.

*Test results South Westphalia University of Applied Sciences, Agriculture Soest

Perfectly ballasted with the Fendt Grip Assistant

Besides the tyre pressure, the ballasting and working speed are also decisive for power transfer to the ground. The new solution is called: Fendt Grip Assistant. With the assistant, which is fully integrated in the Varioterminale, the right tyre pressure and optimal ballast weight or driving speed can be determined quickly. Depending on the implement or given ballasting situation of the tractor, the Grip Assistant recommends either front and wheel weights, or the optimal working speed.

Front axle with self-levelling independent wheel suspension and single wheel brake



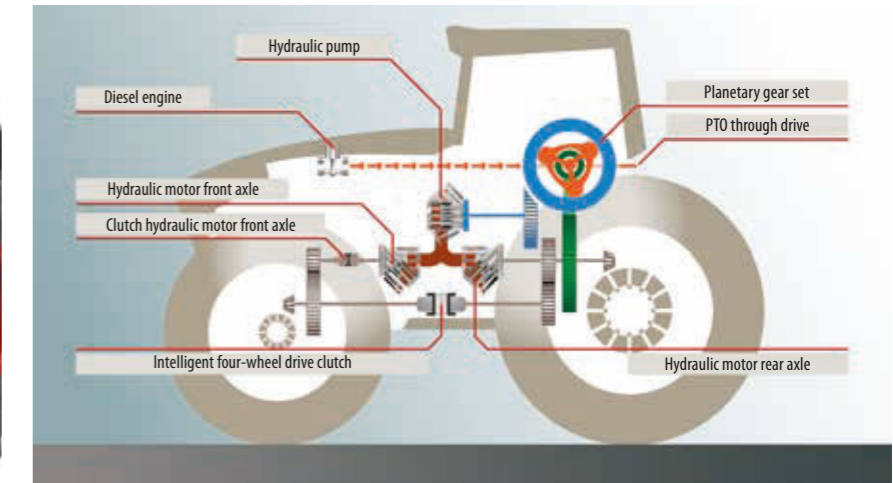
Front axle suspension

The self-levelling independent wheel suspension on the Fendt 1000 Vario guarantees optimal ground contact of the front wheels under all conditions and reliably prevents power-hopping for the best pulling power. Ride comfort and safety also are maintained at transport speeds up to 60 km/h. The long suspension travel maintains ride comfort independent of the load. Operators can travel through the suspension manually, for example, when picking up weight without a front lift with the comfort ballast pick-up feature. A further benefit: The single wheel suspension is maintenance-free.



The Grip Assistant recommends the right tyre pressure and ballasting for a defined speed when in Speed Select mode. In Ballast Select mode, the assistant recommends the ideal working speed as well as the optimal tyre pressure for a defined ballast.

Schematic of the Fendt VarioDrive design concept



The perfect integral tyre pressure regulation system VarioGrip controls tyre pressures from 0.6 to 2.5 bar within minutes. The optimal tyre pressure saves fuel, protects the soil and increases traction.

ADDED VALUE THROUGH ASSISTANCE SYSTEMS

Assistants for reliability

The special thing about Fendt assistance systems: You do not notice them, because they make all operations easier and safer.

Engine transmission assistants

The Tractor Management System (TMS) automatically adjusts for the ideal engine and transmission coordination. The TMS controls the engine speed and transmission setting automatically, independent of the speed, so that the tractor is always moving at an economic optimum, thus saving fuel. The engine load reduction is controlled by the automatic maximum output control 2.0, depending on implement operation.

Driver assistance

Driving safety matters, on the road and in the field. The unique Fendt Stability Control (FSC) provides additional stability and steering precision when driving above 20 km/h on the road. When coming out of a curve, the Fendt Reaction steering system automatically goes over to straight-ahead driving. The VarioActive superimposed steering system facilitates steering: A single turn of the steering wheel is enough for a full steering angle.

Braking assistants

A highlight that you would not want to do without: In the automatic setting, the new Handbrake Assistant automatically activates the handbrake when you climb out of the cab or turn off the engine.

And vice versa, the assistant automatically deactivates the handbrake when starting off. If you stop and take your foot off the brake pedal, the tractor stays standing safely, even on slopes. The Deceleration Assistant, which automatically actuates the brake lights when decelerating more than 1 m/s^2 , even before actively braking, provides additional safety when braking. This provides an early warning for traffic following the tractor.



Hand brake assistant in automatic position: The hand brake is automatically activated.



With VarioActive, you already go through the full steering angle with just one turn of the steering wheel.



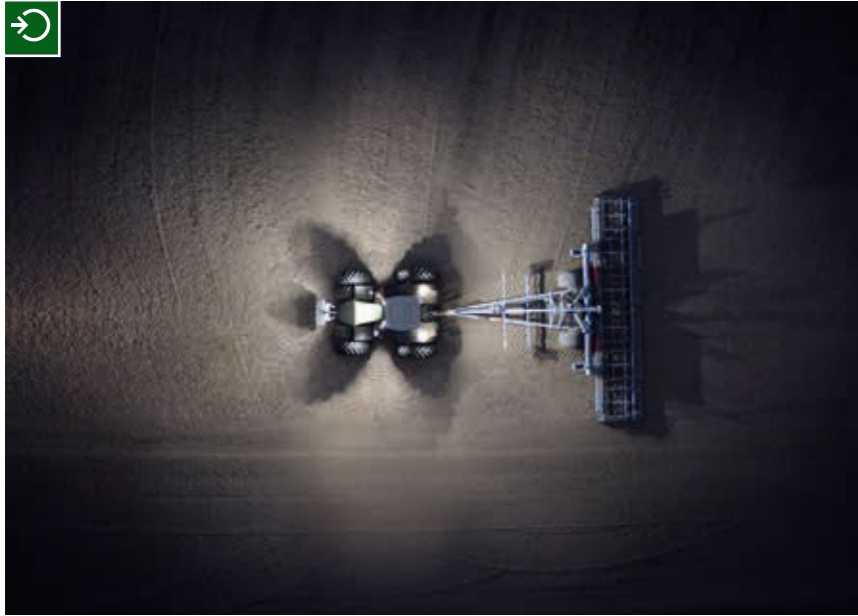
Thanks to the TMS tractor management system and the automatic maximum output control 2.0, the tractor adapts the engine speed optimally to the driving speed.

LIGHTING EQUIPMENT



Test the illuminating power of the Fendt 1000 Vario.
www.fendt.com/Beleuchtung

The Fendt 1000 Vario with a total of 45,860 lm of LED illuminating power, ensures the best performance at night. Whether equipped with LED or Halogen lamps, the complete working area is uniformly lit. The interior of the cab also makes night work pleasant: All operating elements are backlit and dim automatically when it gets dark. With the coming home feature, the cab and driving lights continue to shine after the tractor has been turned off.



LED daytime running lamps and work lights integrated in the front of the bonnet including bonnet camera.



In the version without daytime lights or work lights, XX are fitted to maintain an appealing design.



The headland range can be set manually with the rotary control in the roof liner.



The Fendt 1000 Vario has a third brake light for greater safety on the road.



The entrance step lighting integrated on the side of the tank guarantees safe entering and exiting the cab.



With the coming home function, the headlamps and the lights on the entry steps continue to shine after the engine has been turned off so that the way home as well as the steps are illuminated.



The ambient lighting creates a pleasant atmosphere when working at night. All functional elements have backlighting.

CAB



The super comfort seat Evolution dynamic has air-suspension and active climate control as well as a backrest extension.

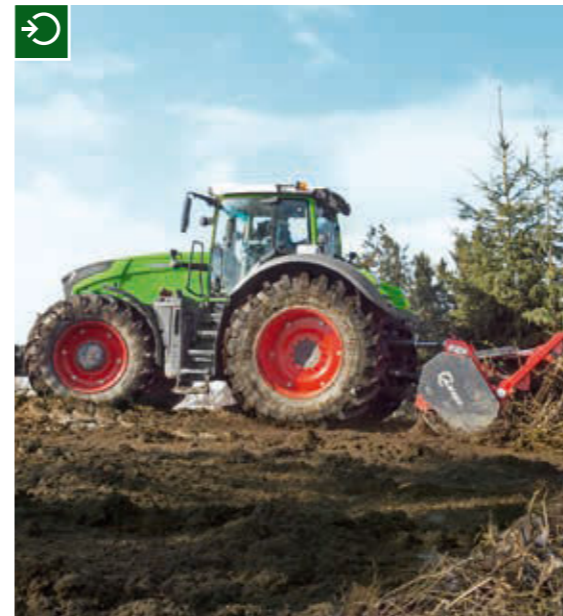


The new Dualmotion comfort seat Fendt Evolution with seat heater, climate control and Dualmotion swing-along backrest, is especially comfortable and ergonomic.



The new black leather version of the Dualmotion comfort seat Fendt Evolution active with active suspension is especially classy and dirt-resistant – and always comes with a comfort passenger seat in leather combination.

The comfort passenger seat is ergonomically shaped and additionally cushioned. Folded down, it turns into a table with a clamp for papers.



When operating in reverse drive mode, all control elements can be operated just as comfortably as in front drive mode. The entire driver station is simply turned around 180° – and everything else in the cab can remain where it is. Despite the reversing driver station, passengers do not have to do without the comfort seat.



For enhanced operating comfort, the cockpit swings parallel with the steering wheel.



With the aid of the interior rearview mirror, you always have your implement in view.



The 220° side window wiper also guarantees an optimal view to the right side, even in adverse conditions.

CAB



Discover the numerous storage options.
www.fendt.com/Ablage



The multifunction armrest with Power equipment with Varioterminal 7"; Power joystick with Varionic¹¹ headland management, cruise control keys and engine speed; EPC operating module for rear power lift, PTO; The Varioterminal 7" in smartphone look with real glass surface offers an excellent overview of all function, an intuitive menu navigation, touch and key control as well as ISOBUS implement control.



In the Profi equipment level, the complete controls for the tractor are integrated in the multifunction armrest, which is attached to the seat: Varioterminal 10.4"; multi-function joystick with keys for the 3rd and 4th auxiliary control unit and Variotronic¹¹ headland management, cruise control keys and engine speed; crossgate lever for the 1st and 2nd auxiliary control unit, EHR control module for front and rear linkage, PTO. The Varioterminal 10.4" in smartphone look and real glass surface delivers a brilliant image with 800 x 600 pixels and 16 million colours. You can control all the tractor and implement functions with the touchscreen or keys. Furthermore, it has two camera inputs, a quarter and full-screen view and is backlit by LEDs in day and night mode.



The Life Cab is a Meisterwerk in terms of storage options: From a bottle holder for several large bottles, to a large storage compartment in the roof liner, up to the cooling compartment and several document compartments behind the driver seat and on the sides there are up to 18 storage spaces usefully integrated.

LINKAGE AND HYDRAULICS

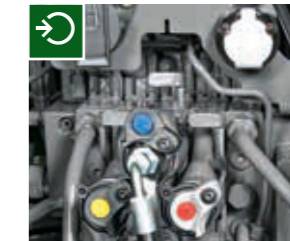
More basic rear equipment, e.g. without rear linkage and PTO, however, still offers a full range of modular hitch systems that can be flexibly exchanged according to your needs.

The self-closing valve flaps protect against contamination and enable one-handed coupling.

The front lift is perfectly integrated in the vehicle.



The Fendt 1000 Vario can be customised by upgrading or downgrading. The fully equipped rear area has all the connections and functions, such as power beyond, ISOBUS socket, rear return, PTO and rear linkage.



The Fendt 1000 Vario provides connections for up to seven control units, six at the rear and one in the front.

The DCUP couplings permit all hydraulic valves to be coupled under pressure on both sides. The pressure relief lever permits easy coupling.

Using the comfort ballast pickup, front weights can be picked up quickly and easily, even without front linkage.



The 4-fold bearing, pneumatic comfort cab suspension with integral level control reduces vibrations to a minimum.



The mechanical cab suspension rests on two conical bearings at the front and on two mechanical spring elements at the rear.



The integral cable lead-through permits clean cable routing with closed rear window, protects against dirt, water and noise. No cable spaghetti: All cables are fixed in the cable guide in the C-pillar.



Like every Fendt, the Fendt 1000 Vario also features numerous practical details to make your working days easier, including automatic indicator reset, where the tractor automatically stops indicating once a turning process has been completed.



With the external valve controls, you can actuate the rear linkage, one valve and the PTO directly on the rear mudguards.



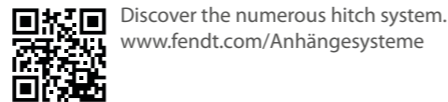
For non-European standards, the rear can also be equipped with rub blocks and a quick hitch frame. Optionally, the Fendt 1000 Vario can be fitted for a 60" track..



The Fendt 1000 Vario offers a flanged axle or an axle stub variant to meet different requirements.



ACCESSIBILITY AND BOTTOM HITCHES



Discover the numerous hitch system.
www.fendt.com/Anhängesysteme

Standard and optional equipment
Standard: ■
Optional: □



The cab is cleaned quickly: The driver seats (super comfort seat Evolution) have a practical connection for a compressed air hose, which can be used to clean the cab.



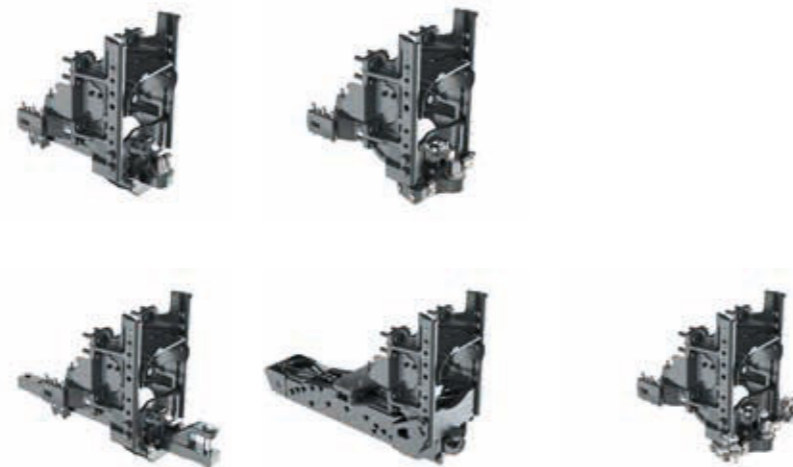
The cab filter is well accessible in the entry area and can be easily cleaned, when necessary.

Maintenance activities, such as checking the oil level or changing the filter, a performed quickly and easily on the Fendt 1000 Vario. The engine compartment is especially easy to access thanks to the removable side panels.



The Fendt 1000 Vario has highly flexible ballasting options. Diverse front weights from 870 kg to max. 3.300 kg are available, as well as wheel weights from 2 x 650 kg each up to 2 x 1250 kg.

Piton Fix is available in standard and heavy-duty versions



The length of the extendable Cat. 4 drawbar with size 50 bolts can be adjusted.

Hitch permits fast and easy hitching.

The ball-type coupling including forced steering left and right allows the trailer to be steered actively.

EQUIPMENT VARIANTS

Fendt 1000 Vario.
So individual. Such a Meisterwerk.

		PowerPlus	Profi	ProfiPlus
Engine	Fuel pre-filter (heated)	□	□	□
	Preheater unit (engine, transmission, hydraulic oil)	□	□	□
	Exhaust brake	□	□	□
Transmission	Shuttle function, stop-and-go function	■	■	■
	Acoustic signal when reversing	□	□	□
Vario operation	Speed control lever with cruise control and engine speed memory, automatic modes	■	□	□
	Multi-function joystick with cruise control, engine speed memory, automatic modes, controls for hydraulics	□	■	■
	Varioterminal 7 with touchscreen and key control	■	■	■
	Varioterminal 10.4 with touchscreen and key control	□	□	■
	Variotronic implement control for ISOBUS	■	■	■
	Variotronic [®] - Headland Management System ready for automatic steering system	■	■	■
	Guidance system VarioGuide NovAtel / Trimble	□	□	□
	VarioDoc - documentation system (only with Varioterminal 10.4 ^{*)})	□	□	■
	VarioDoc Pro - documentation system / AgCommand™ telemetry system (only with Varioterminal 10.4 ^{*)})	□	□	□
	SectionControl	□	□	□
	VariableRateControl	□	□	□
	VarioActive steering	□	□	■
	Electronic immobiliser	■	■	■
Without immobiliser	□	□	□	
Cab	Mechanical cab suspension	■	■	■
	Pneumatic cab suspension, 4-point with integral self-levelling	□	□	□
	Super Comfort Seat, air sprung	■	■	■
	Super comfort seat Evolution dynamic / CA	□	□	□
	Super Comfort Seat Evolution active DuMo leather/CA	□	□	□
	Super Comfort Seat Evolution dynamic DuMo/CA	□	□	□
	Super Comfort Seat Evolution dynamic DuMo leather / CA	□	□	□
	Leather pack (steering wheel, operator's seat, instructor seat)	□	□	□
	Comfort instructor seat	■	■	■
	Integrated automatic climate control	■	■	■
	Front windscreen laminated safety glass, heated	□	□	□
	Rear window heated	□	□	□
	300°-front windscreen wipers (with continuous windscreen)	■	■	■
	Rear window wash/wipe	□	□	□
	Side window wash/wipe system right	□	□	□
	Ext. rearview mirror, electrically adjustable + wide angle + position light	■	■	■
	Radio mounting kit with two stereo speakers	■	■	■
	Radio CD MP3	□	□	□
	Radio CD MP3 hands-free speaking system	□	□	□
	EC tachograph standard	□	□	□
Radar sensor	□	□	□	
Reverse drive control	□	□	□	
Cool box	□	□	□	
Lighting	Auxiliary lights front	■	■	■
	LED corner light	□	□	□
	Work lights LED A-pillar, rear mudguard	□	□	□
	LED rear roof work lights 4x	□	□	□
	Work lights 2x front roof 2x pairs LED	□	□	□
	LED headlamps with headlamp levelling	□	□	□
	LED rear lights	□	□	□
	Work lights on top of bonnet, including LED daytime headlights	□	□	□

		PowerPlus	Profi	ProfiPlus
Chassis	FSC Fendt Stability Control	□	□	□
	Single wheel suspension front axle	■	■	■
	Pneumatic high-speed dual-circuit braking system 1 pedal	■	■	■
	Pneumatic high-speed dual-circuit braking system 2 pedal	□	□	□
	Electro-pneumatic handbrake	■	■	■
	Electro-pneumatic handbrake (handbrake assist)	□	□	□
	Automatic trailer steering axle lock	□	□	□
	Compressed air system 1-/2- circuit system	■	■	■
	Compressed air Duomatic coupling	□	□	□
	VarioGrip tyre pressure regulation system	□	□	□
Grip Assistant	■	■	■	
4WD	Rear / front differential with 100% disc locking and steering angle sensors	■	■	■
Power lift	Tractive power and stepless mixed control	■	■	■
	Clearance, position control	■	■	■
	Sa front power lift, with external control (separate valve)	□	□	□
	Comfort front power lift da, with position control, external controls	□	□	□
	Electrohydraulic power lift da (EHR), with external controls	□	□	□
Electrohydraulic power lift sa (EHR), Lower link tail arrester cat. 4	□	□	□	
PTO	Rear: Flanged PTO 1,000/1,000E/1,300 rpm	□	□	□
	External controls for rear PTO	□	□	□
Hydraulic system	External control for hydraulic control unit at rear	■	■	■
	Load sensing system with axial piston pump (165 l/min)	■	■	■
	Load sensing system with axial piston pump (220 l/min)	□	□	□
	Load sensing system with 2 axial piston pumps (220+210 l/min)	□	□	□
	4. EHS valve at rear	□	□	□
	5. EHS valve at rear	□	□	□
	6. EHS valve at rear	□	□	□
	1. Front EHS valve	□	□	□
	Hydraulic power beyond connection	□	□	□
	Return rear	■	■	■
Unpressurised rear return flow	□	□	□	
Double connect-under-pressure lever couplings rear	■	■	■	
Bio hydraulic oil	□	□	□	
Additional equipment	Automatic trailer hitch with remote control, rear	■	■	■
	Ball coupling, height adjustable	□	□	□
	Ball coupling, short, in the bottom hitch	□	□	□
	Ball coupling, long, in the bottom hitch	□	□	□
	Hitch	□	□	□
	Drawbar	■	■	■
	Piton-fix	□	□	□
	Comfort ballast for front-end weight (not available with front power lift)	■	■	■
	Wheel weights, rear wheels	□	□	□
	Forced steering (one or two-sided)	□	□	□
Wide vehicle marker	□	□	□	
ABS trailer sockets	□	□	□	

FENDT 1000 VARIO

Technical Specifications.



		1038	1042	1046	1050	
Engine	Fendt 1000 Vario					
	Rated power ECE R 120	kW/hp	291/396	320/435	350/476	380/517
	Maximum power ECE R 120	kW/hp	291/396	320/435	350/476	380/517
	Constant power ECE R 120 from 1500 rpm to 1700 rpm	kW/hp	291/396	320/435	350/476	380/517
	No. of cylinders	Number	6	6	6	6
	Cylinder bore/stroke	mm	126/166	126/166	126/166	126/166
	Cubic capacity	cm ³	12419	12419	12419	12419
	Rated speed	rpm	1700	1700	1700	1700
	Max. torque at 1000-1500 rpm	Nm	1910	2108	2305	2420
	Torque rise	%	17	17	17	13
	Fuel level	litres	800	800	800	800
	AdBlue tank	litres	85	85	85	85
	Constant power range	rpm	1500 - 1700	1500 - 1700	1500 - 1700	1500 - 1700
Transmission and PTO	Transmission type		TA 400	TA 400	TA 400	TA 400
	Speed range forward	km/h	0,02-60	0,02-60	0,02-60	0,02-60
	Speed range reverse	km/h	0,02-33	0,02-33	0,02-33	0,02-33
	Top speed	km/h	60	60	60	60
	Rear PTO optional		1000/1000E/1300	1000/1000E/1300	1000/1000E/1300	1000/1000E/1300
	Power lift and hydraulics	Variable flow pump	l/min	165	165	165
Variable flow pump option 1		l/min	220	220	220	220
Variable flow pump option 2		l/min	220+210	220+210	220+210	220+210
Working pressure / control pressure		bar	200	200	200	200
Max. valves (front/centre/rear) Power Plus		Number	1/0/6	1/0/6	1/0/6	1/0/6
Max. valves (front/centre/rear) Profi / Profi Plus		Number	1/0/6	1/0/6	1/0/6	1/0/6
Max. available hydraulic oil volume		litres	100	100	100	100
Max. lift capacity of rear power lift		daN	12920	12920	12920	12920
Max. lift capacity of front power lift		daN	5584	5584	5584	5584
Electrical features		Batteries	Number	2	2	2
	Battery power	Ah/V	180/12	180/12	180/12	180/12
	Alternator	V/A	14/270	14/270	14/270	14/270
Tyres	Front tyres (standard)		650/65R34	650/65R38	650/65R38	650/65R38
	Standard tyres rear		710/75R42	750/75R46	750/75R46	750/75R46
	1. Optional front tyres		650/65R38	710/60R38	710/60R38	710/60R38
	1. Optional rear tyres		750/75R46	900/65R46	900/65R46	900/65R46
	2. Optional front tyres		710/60R34			
	2. Optional rear tyres		900/60R42			
	3. Optional front tyres		710/60R38			
3. Optional rear tyres		900/65R46				
Dimensions	Front track width (standard tyres)	mm	2100	2100	2100	2100
	Rear track width (standard tyres)	mm	2000	2000	2000	2000
	Overall width with standard tyres	mm	2750	2750	2750	2750
	Overall length	mm	6350	6350	6350	6350
	Overall cab height with standard tyres without VarioGuide	mm	3470	3570	3570	3570
	Overall cab height with standard tyres with VarioGuide	mm	3506	3606	3606	3606
	Max. ground clearance	mm	500	600	600	600
	Wheelbase	mm	3300	3300	3300	3300
Weights	Unladen weight (base tractor with cab - full tanks, without driver)	kg	14000	14000	14000	14000
	Max. permissible overall weight up to 40 km/h country-specific exception approval required	kg	23000	23000	23000	23000
	Max. permissible overall weight up to 40km/h (2-circuit brake)	kg	21000	21000	21000	21000
	Max. permissible overall weight up to 50km/h (2-circuit brake)	kg	21000	21000	21000	21000
	Max. permissible overall weight up to 60km/h (2-circuit brake)	kg	18000	18000	18000	18000
	Max. trailer hitch load	kg	2000	2000	2000	2000

FAQ. EVERYTHING ABOUT FENDT.

What can we do for you?

What makes Fendt Service different?

For us, service means knowing and understanding your work in order to meet your demands for reliability and safety and to act in your economic interest. We stand behind our products and have developed them for the highest demands and long-term operation. Our service is the partnership aspect for your work.

What is the Fendt one-terminal concept?

On the one hand, only one terminal means: The vehicle controls, ISOBUS implement control, VarioGuide automated steering, VarioDoc documentation, camera functions or various assist functions are all conveniently controlled through one terminal, the Fendt Varioterminal. Only one terminal also means that at Fendt, the operating interface is the same across the entire range and is logical. No matter if you are driving a Fendt Vario, a Fendt combine or a Fendt Katana, you will find your way around immediately and feel at home in all the Fendt machines.

Can I update Variotronic?

Fendt Variotronic can be updated. In this way you always have the latest version on your Fendt and have the future on your terminal. Please contact your dealer for further information.

What is Fendt Expert?

Become a Vario pro with Fendt Expert driver training: Are you already familiar with all the functions that the technology has to offer? Take advantage of the technology that is found in every Fendt Vario and learn how to optimise the use of all the features with Fendt Expert. Our team of professional instructors offers you competent instruction to enable you to exploit the full performance potential of your Fendt tractor. Inform yourself through your dealer and sign up.

What is Fuse™?

Fuse™ Technologies provides ultra-modern precision farming solutions across all AGCO brands. It permits farmers and contractors to integrate and connect their entire fleet seamlessly, resulting in reduced operating costs and even more efficient and profitable machine operations. www.agcotechologies.com

Contact to Fendt.

fendt.com

Here you will find everything online, from brochures to technical specifications, reports about customers or the company, up to the Fendt event calendar.

Fendt Configurator

With the Fendt Vehicle Configurator, you can choose from all the available equipment variations and put together the optimally equipped vehicle for your farm. The Fendt Configurator is available online at www.fendt.com, where you will find a quick link to it directly on the start page.

fendt.tv

Fendt around the clock – our Fendt Media Library makes it possible. Our internet TV provides you with news and information about Fendt 24/7.

Test drives

At fendt.com, you will find the area Service and Sales under "Fendt World". Select the "tractor demonstration service", then you can already register for a test drive with a tractor.



FENDT

Leaders drive Fendt.



www.fendt.com

AGCO GmbH – Fendt Marketing 87616
Marktobersdorf, Germany



Fendt is a worldwide brand of AGCO.
All data regarding delivery, appearance, performance, dimensions and weight, fuel consumption and running costs of the vehicles correspond with the latest information available at the time of going to press. Changes may be made before the time of purchase. Your Fendt dealer will be pleased to supply you with up-to-date information. Vehicles are not shown with country-specific equipment.